



Competitiveness and Innovation of Aerospace Industry

BoostAeroSpace

Secured Infrastructure

foundation of the BoostAeroSpace Trust Circle

Patrick Boquet

BoostAeroSpace Project Committee, in charge of Security Portal

Technical architecture and hosting for the Collaboration and PLM solutions

Thales

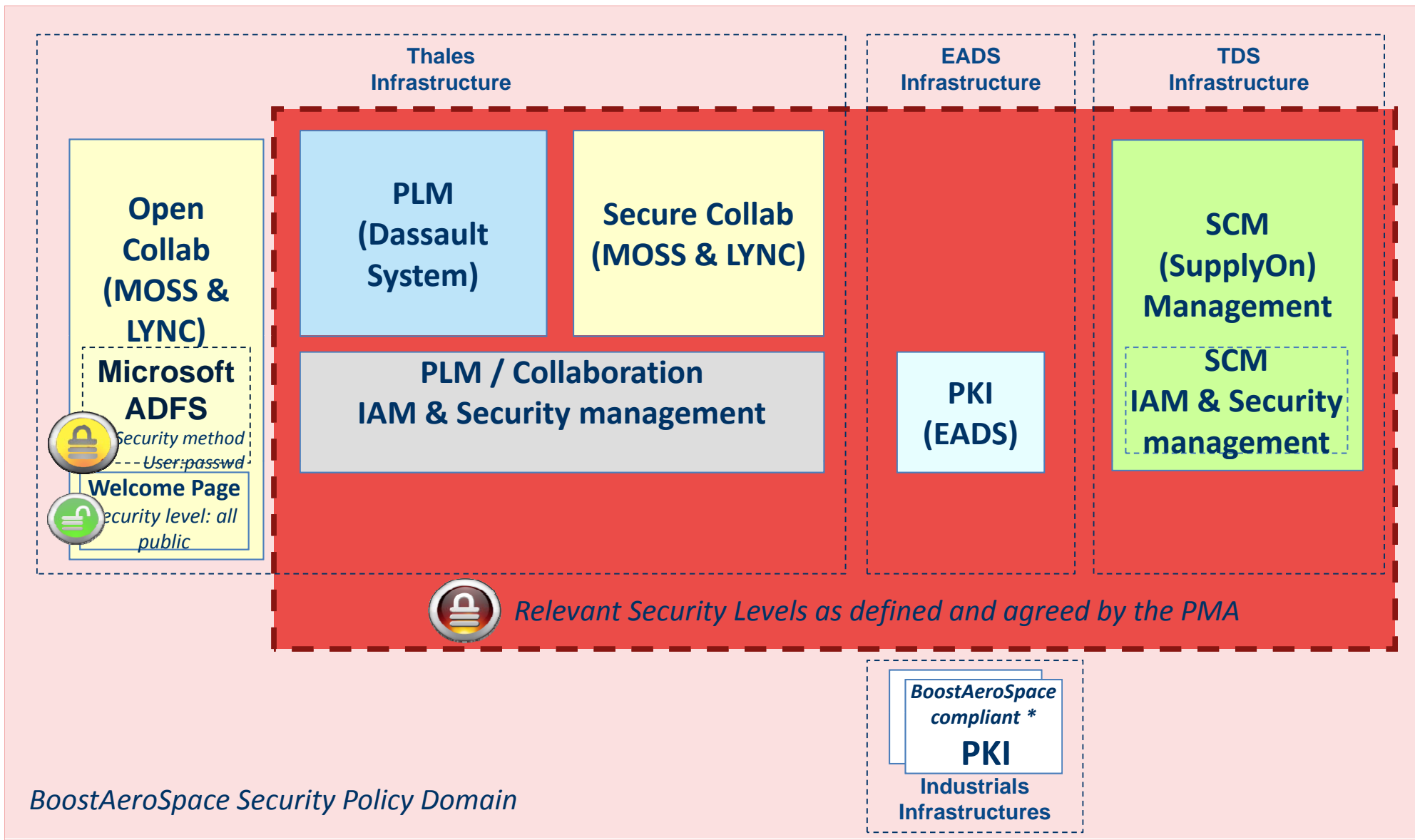
Patrick.boquet@fr.thalesgroup.com

Aéro-Club de France

May 25th, 2011

<http://www.boostaerospace.com>





* Following BoostAeroSpace PMA security policy

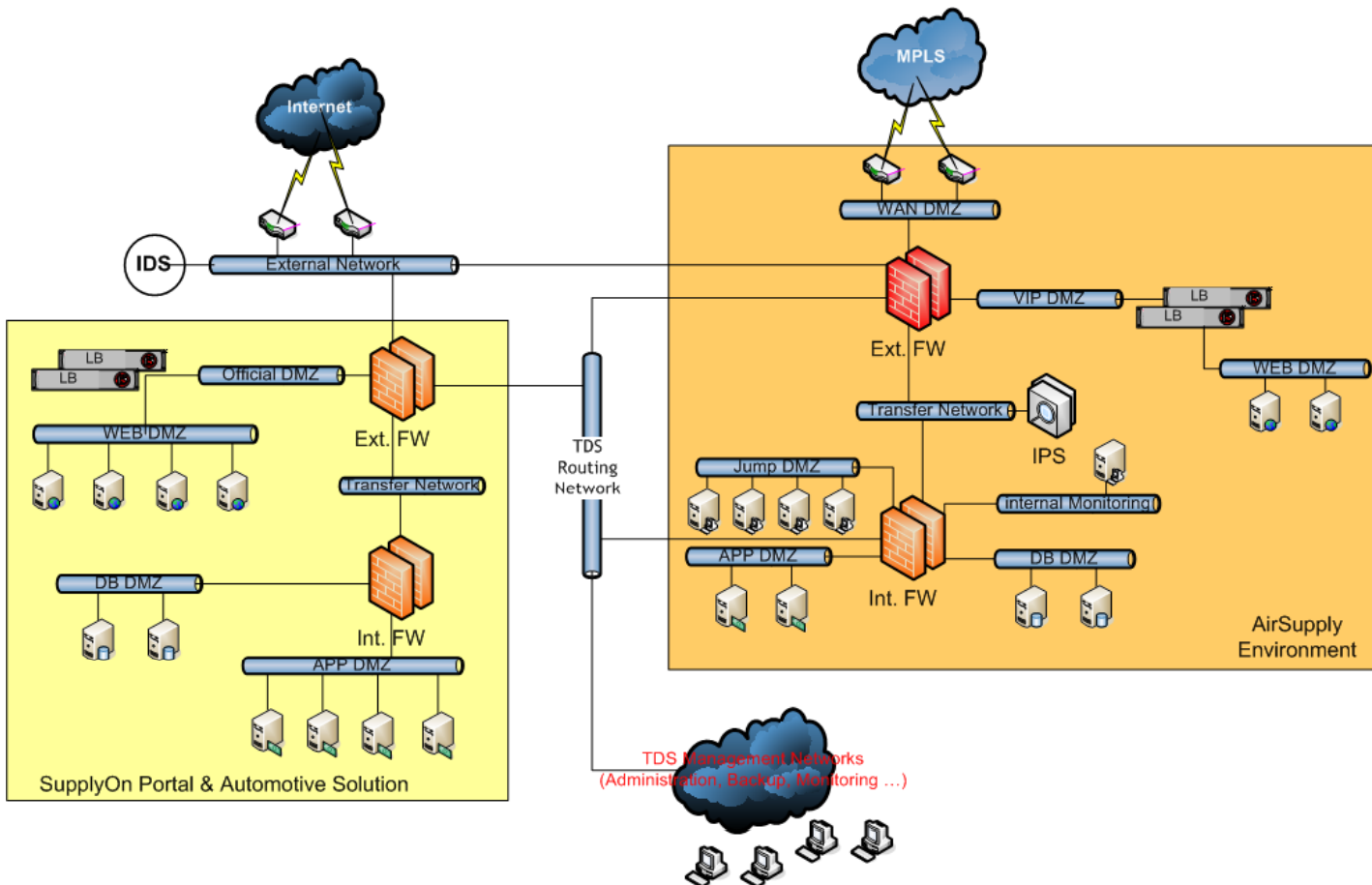
Dedicated Architecture for BoostAeroSpace

Several dedicated areas:

- Internet, MPLS
- Web, Application, Database
- Different System environments (PRD, PRE-PRD, INT, DEV)

Security Infrastructure:

- External & Internal firewalls
- Web traffic analyzed by WAF
- Network traffic inspected by IPS
- Central jump station used for system administration



Dedicated Architecture for BoostAeroSpace

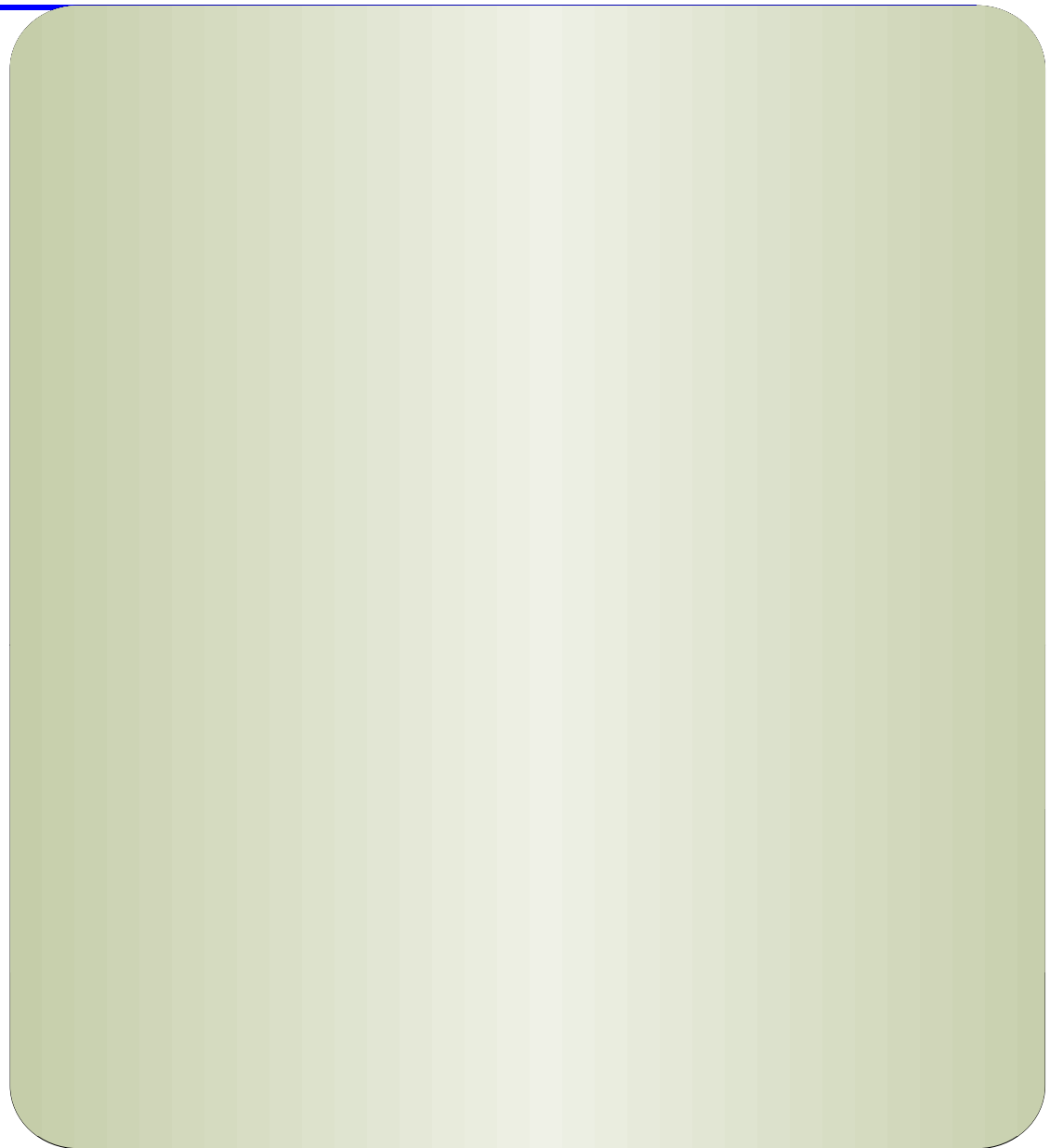
Several separated areas:

- Open Collab
- Peripheral DMZ
- Internal DMZ
 - Security portal application
 - Secured Collaboration application
 - PLM application
 - Data for applications
 - Services

Security, physical components:

- Dual network (production & services)
- Redundant Firewalls and switches

Security management for network, system, and applications

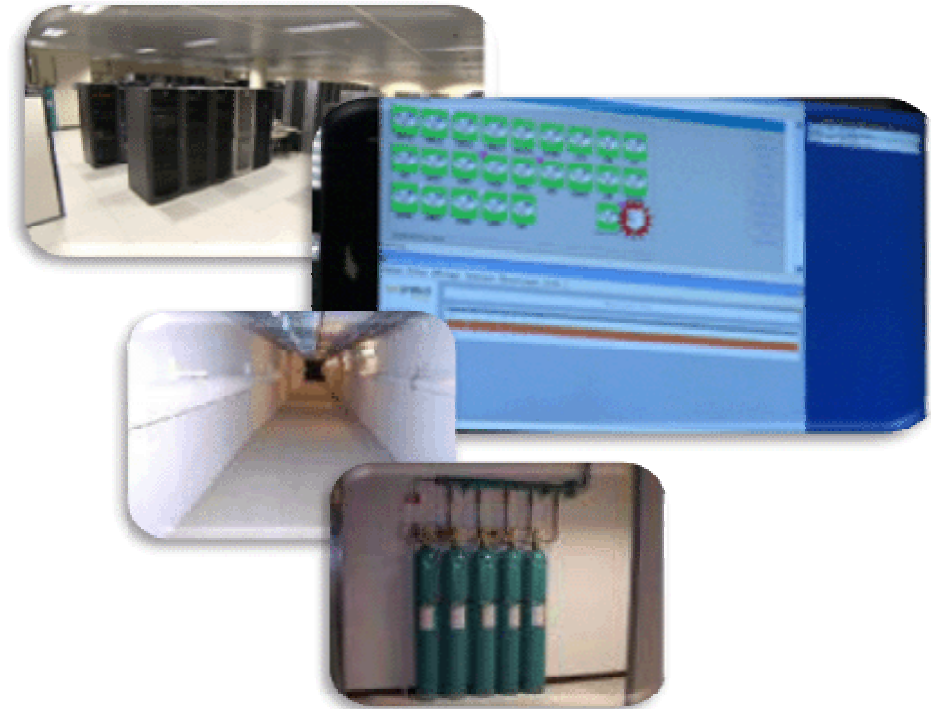


BAS technical architecture hosted and managed by Thales Services in the Elancourt Data Center (process ITIL and ISO 20 000 certification)

Center with a very high safety level :

- Fully secured computer site
- Controlled & supported 24h a day, 7 days a week
- Fire alarms
- Staff with secured profiles

Industrial site with access control (ERR)





Help Desk



- High quality level
- Competences & skills : > 50% engineers
- 24 hour a day, 7 days a week
- Multi-languages support

Supervision



- 24 h a day / 7 days a week
- Application software and hardware support
- Security high level

Applications Production



- Application support
- Administration
- Technical qualification
- Performances



Iso 20000

Delivery



Client



Management

Iso 20000

Hosting



- 24h a day / 7 days a week
- Hosting in high level security Data Center
- Activity Recovery Plan

Network management



- 24 h a day / 7 days a week
- WAN, LAN, audio & video
- Security System
- Design, integration & administration